

A Village Walk

The main entrance to the village is from the A651 Bradford – Dewsbury Road. Turn onto South View Road and after 150yds Park outside the Remembrance Gardens, the start of our walk. Stop to take a look at the war memorial, built around 1919/20 by the Oddy family and dedicated to the fallen of East Bierley and Hunsworth in the two world wars plus the Iraq conflict.



Next to the gardens is St Luke's Church and Hall. The Memorial Hall was built around the 1900 and given to the village. The hall was used as a Community Centre, the Conservatory Club which had a snooker room upstairs and had a separate building used as a mortuary. It was later given to Hunsworth Council to use as offices. During 1939/45 it was occupied by the Home Guard., the A.R.P. and the St Johns Ambulance Cadets. Around 1960, the Church purchased the hall and after extensive alterations created the building you see today. It is thought that the inscription 'St Luke's Church Hall' on the outer wall covers the original inscription 'Memorial Hall'.



Unfortunately, because of extensive repairs needed the Church has recently closed, but it is hoped that once bought and repairs carried out, part of it will become a community centre again.

Crossing the single-track road 'Bierley Marsh' we arrive at a small seating area around the Silver Jubilee Tree. Planted in 1978 to commemorate the Silver Jubilee of Her Majesty Queen Elizabeth 2. Unfortunately, owing to the fact that it is planted on a shale tip, it is the third attempt to grow one here.

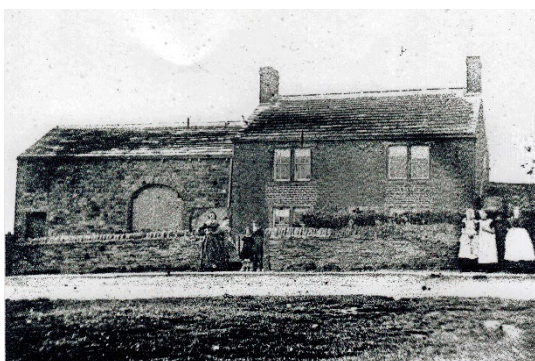


Our next building is the Village School, East Bierley Church of England VC



Primary School Built on the site of the first church/school erected in the village which had moved up from its original home further down Hunsworth Lane at its junction with Lower Lane. It was dismantled and taken brick by brick to its present home.

Outside the school gates we cross South View Road and in front of us is Marsh Farm built in 1740 and still recognisable today



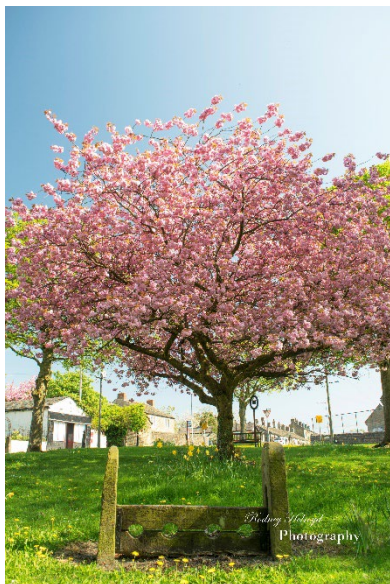
We follow South View Road across the top of the Village Green taking note of the award of best kept village 1994 awarded by the Dalesman Magazine. A very proud time for the Village. Here we also get our first sight of the Village Stocks.



Walking on past the now closed Post Office, a sad sign of the times we live in, and around a right-hand bend we come to the Village Cricket Ground. A club with a long tradition and a reputation to match. It is proud to boast one of the finest views in all Yorkshire with



views of the Pennine Hills some 20 miles away enjoyed from the front of its Pavilion.



Retracing our steps, we return to the Village Green (arrive in spring to see an abundance of Snowdrops, Crocus and Daffodil not forgetting the glorious display from the Flowering Cherry, planted to commemorate the Coronation of Queen Elizabeth 2) and take the diagonal path towards Hunsworth Lane. Before reaching the road take a look to the south over the recreational field and its far-reaching views to equal those of the cricket



field, again an area filled with Daffodils in the spring.

Turn left and walk up hill slightly to cross the road just before the imposing building that was



originally the Free Church, built in 1889 and now converted into accommodation.



Turn along Bierley Marsh

and on your left is the Village Well. Not a lot is known other than it was the village's only water source before piped water and that it was last used in the drought of 1936.

Continue along this un-adopted road until you reach the Pond, a jewel in the eyes of residents and visitors alike. Extensive works has been carried out during 2018 in a joint effort between the Village Preservation Society, Kirklees Council and our main sponsor, Essential Healthcare.



You will notice two stones sat one on top of the other, known locally as the Cup and Saucer. These are possibly the oldest structures in the village dating from before 1379. The hollow in the top is thought to have held a wooden cross and the area is believed to have been the Village meeting place and the place for worship.

The house in the corner is Crosse House and it carries a date stone of 1662 although there have been other houses on this site before then. It is now the oldest building in the Village. Records show it was a place of worship if the weather was bad.



Our route from here follows the road round Bierley Marsh. As the name suggests this green area was once marshland and a pit hill now used as an outdoor play area for the school during the

summer months. We continue along in front of St Luke's and back to our start point on South View Road.

