

EcoHolmes is a member-led community land trust who help meet the demand for low cost, low energy housing.

They say:

“We work with the people of the Holme Valley to create low-energy homes, fit for the future that people can afford “.

Housing prices have risen extremely over the past decades and thus have become an issue that most people in Kirklees have to deal with. Meanwhile, as the climate emergency gets closer to home the need for low emission, affordable housing is rising significantly.

In line with the Kirklees goal to be carbon neutral by 2038, an estimated 20,000 low emission, affordable homes are needed.

EcoHolmes - a Community Land Trust

EcoHolmes CLT has been set up by local people to build affordable low-energy homes for local people in housing need, for rent or shared ownership. Land will be gifted to or acquired by the CLT and retained in community ownership in perpetuity, then used to build a secure stable supply of affordable high quality homes. Homes built by the community, for the community!



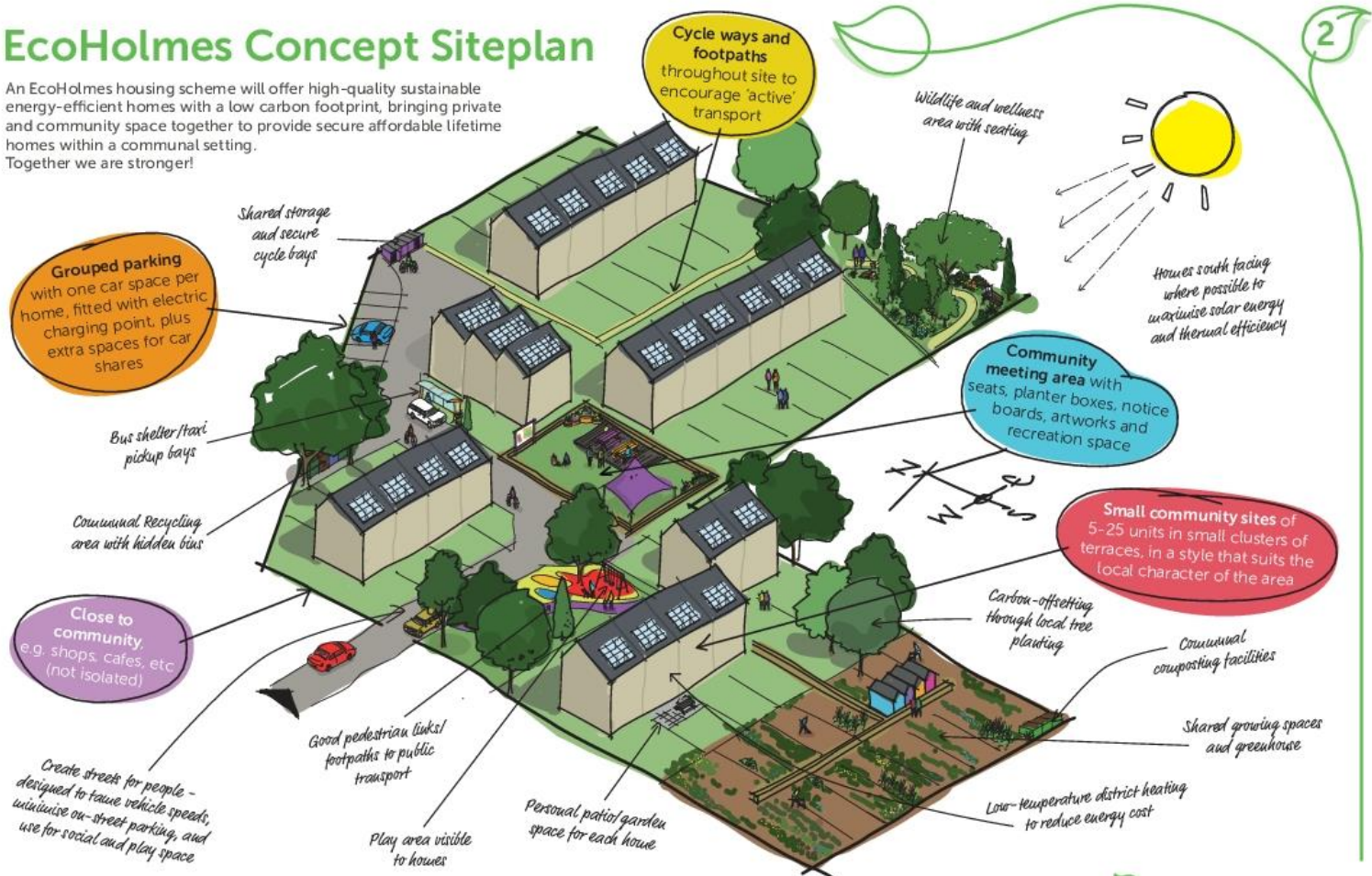
EcoHolmes plan to build affordable low-energy homes for local people in housing need, for rent or shared ownership - homes fit for the future. With these aims in mind, and with feedback from our recent consultations with the Holme Valley community, we have developed a concept scheme for our EcoHolmes community-led housing as illustrated by these presentation boards. EcoHolmes welcomes feedback from the Holme Valley community on these ideas. Email: info@ecoholmes.org.uk www.ecoholmes.org.uk



EcoHolmes
Community Land Trust
AFFORDABLE LOW ENERGY HOUSING
FOR THE HOLME VALLEY

EcoHolmes Concept Siteplan

An EcoHolmes housing scheme will offer high-quality sustainable energy-efficient homes with a low carbon footprint, bringing private and community space together to provide secure affordable lifetime homes within a communal setting. Together we are stronger!



EcoHolmes plan to build affordable low-energy homes for local people in housing need, for rent or shared ownership - homes fit for the future. With these aims in mind, and with feedback from our recent consultations with the Holme Valley community, we have developed a concept scheme for our EcoHolmes community-led housing as illustrated by these presentation boards. EcoHolmes welcomes feedback from the Holme Valley community on these ideas. Email: info@ecoholmes.org.uk www.ecoholmes.org.uk

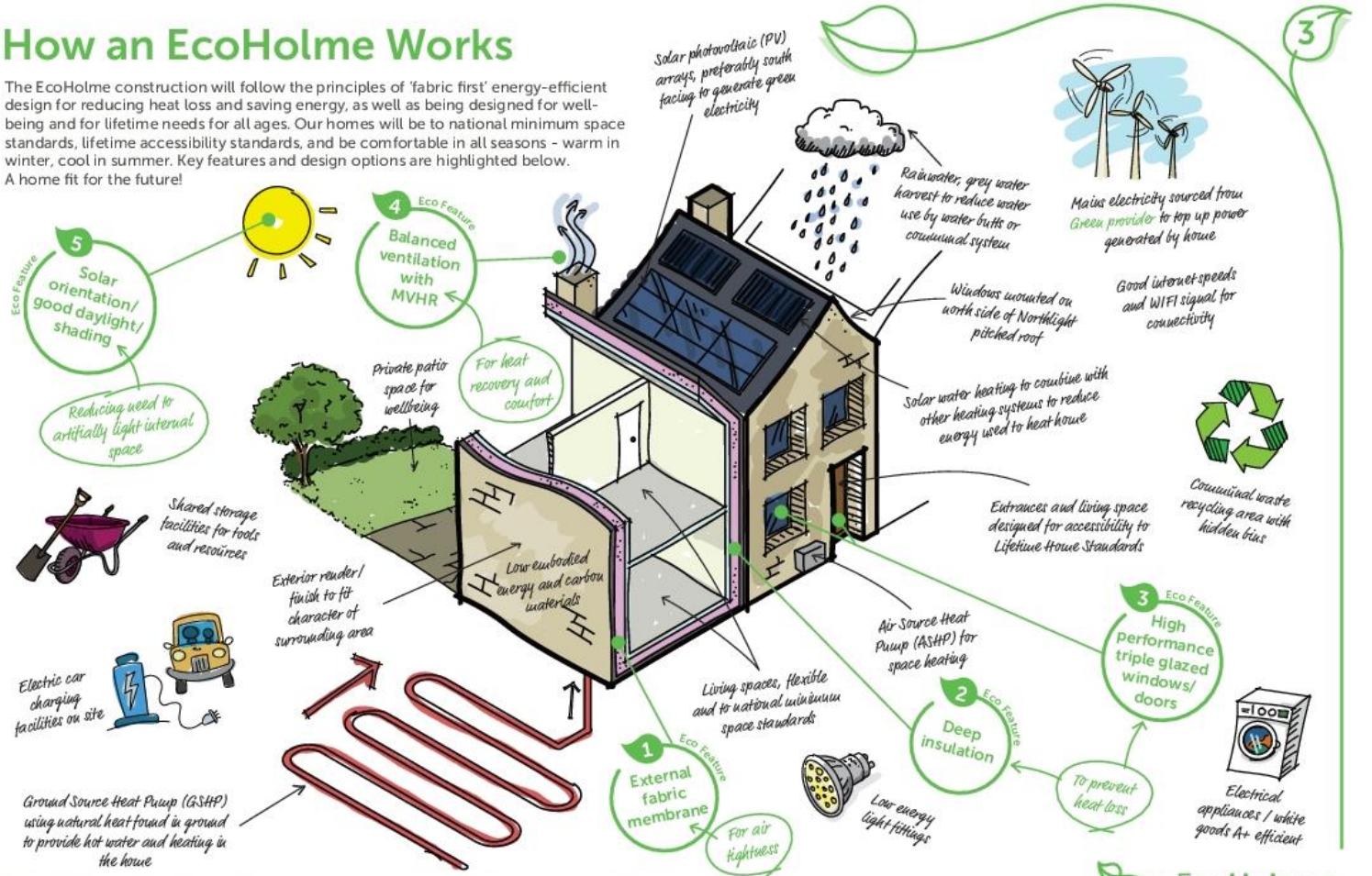
EcoHolmes is the trading name of the Holme Valley Community Land Trust Limited, a charitable Community Benefit Society incorporated under the Cooperative and Benefit Society Act 2014, and registered with the Financial Conduct Authority (FCA) with registration number 8289.



EcoHolmes
Community Land Trust
AFFORDABLE LOW ENERGY HOUSING
FOR THE HOLME VALLEY

How an EcoHolme Works

The EcoHolme construction will follow the principles of 'fabric first' energy-efficient design for reducing heat loss and saving energy, as well as being designed for well-being and for lifetime needs for all ages. Our homes will be to national minimum space standards, lifetime accessibility standards, and be comfortable in all seasons - warm in winter, cool in summer. Key features and design options are highlighted below. A home fit for the future!



EcoHolmes plan to build affordable low-energy homes for local people in housing need, for rent or shared ownership - homes fit for the future. With these aims in mind, and with feedback from our recent consultations with the Holme Valley community, we have developed a concept scheme for our EcoHolmes community-led housing as illustrated by these presentation boards. EcoHolmes welcomes feedback from the Holme Valley community on these ideas. Email: info@ecoholmes.org.uk www.ecoholmes.org.uk

EcoHolmes is the trading name of the Holme Valley Community Land Trust Limited, a charitable Community Benefit Society incorporated under the Cooperative and Benefit Society Act 2014, and registered with the Financial Conduct Authority (FCA) with registration number 8289.



EcoHolmes
Community Land Trust
AFFORDABLE LOW ENERGY HOUSING
FOR THE HOLME VALLEY